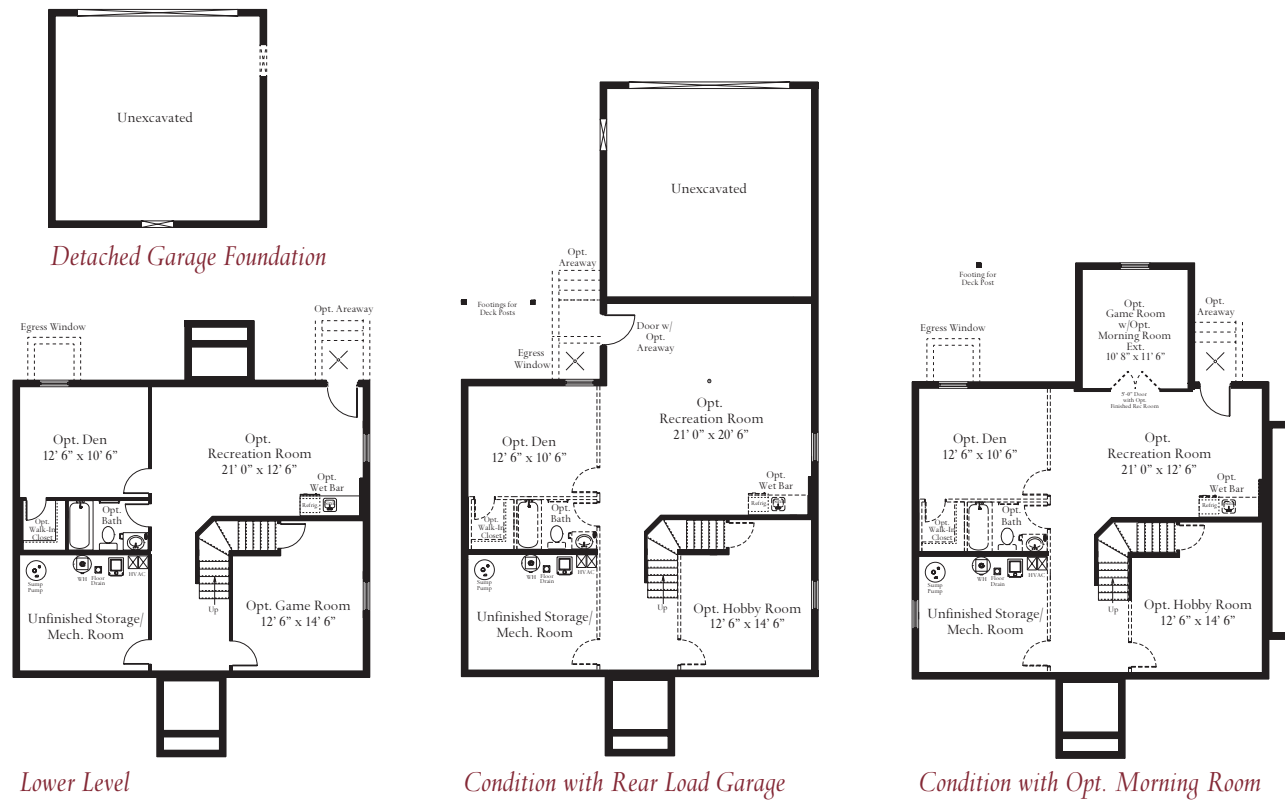
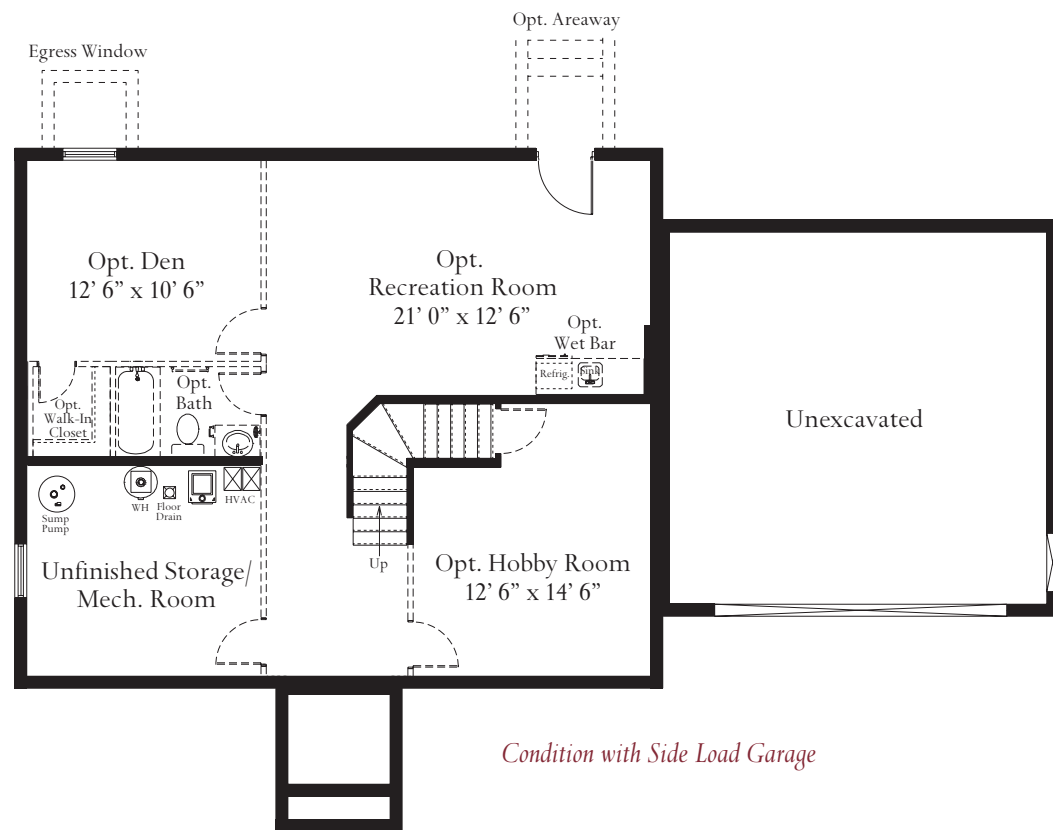


The McKinley



Lower Level



Condition with Side Load Garage



Eastern Seaboard
Showing the Optional Full Front Porch, Dormers, Shutters and Stone to Grade



Craftsman
Showing the Optional Dormers, Portico Porch and Stone to Grade



Eastern Seaboard
Showing the Optional Gable, Portico Porch, Shutters and Stone to Grade



Craftsman
Showing the Optional Gable, 3/4 Front Porch and Stone to Grade

The McKinley is a home that has all of the luxuries expected but with an efficient design that is sure to please. With a large Great Room, open to the Kitchen, entertaining is easy in The McKinley. A large kitchen, complete with pantry and an oversized island, is the perfect gathering spot for the whole family. Just off of the foyer is the Library, a perfect space for a home office or more formal retreat. On the other side of the foyer is the Family Dining Room. Upstairs, the Master Suite includes a large bedroom and bath, complete with double vanities, oversized shower with seat, linen closet and walk in closet. Three additional bedrooms are on the upper level, along with a hall bath and generously sized laundry room. The lower level can be finished to include a Rec Room, Den, Full Bath and Wet Bar. Please note that renderings may show optional items.

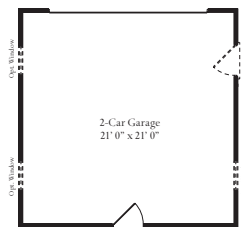
The McKinley starts at 2,160 square feet.

LOWER LEVEL

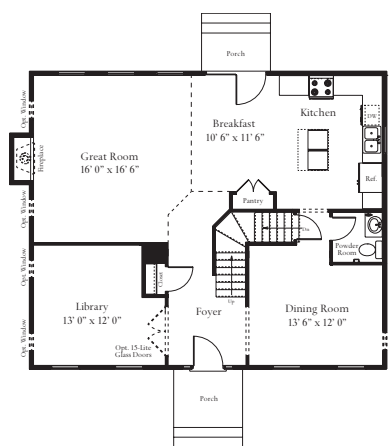
ATLANTIC BUILDERS
EXPERIENCE THE DIFFERENCE



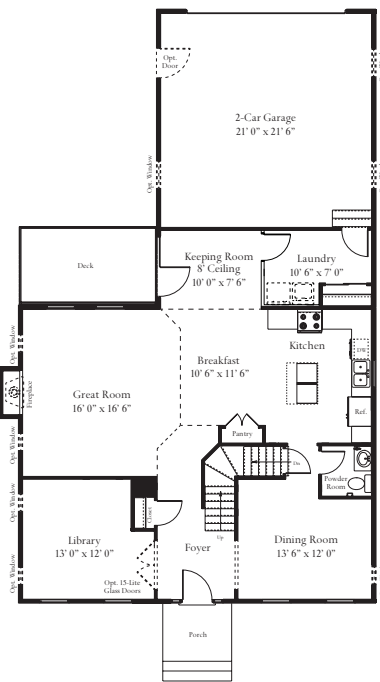
ATLANTIC BUILDERS
EXPERIENCE THE DIFFERENCE



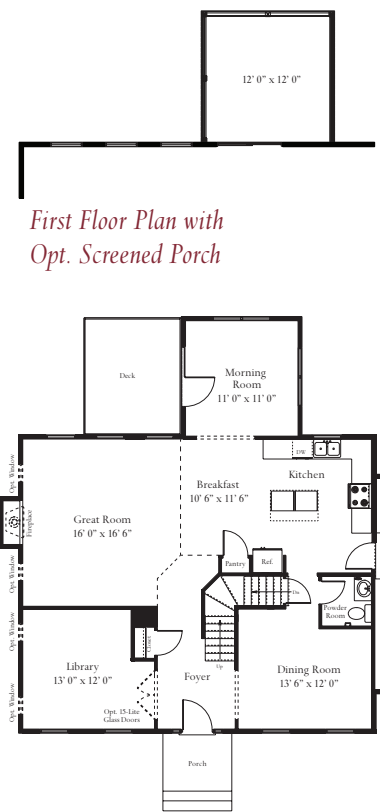
Detached Garage



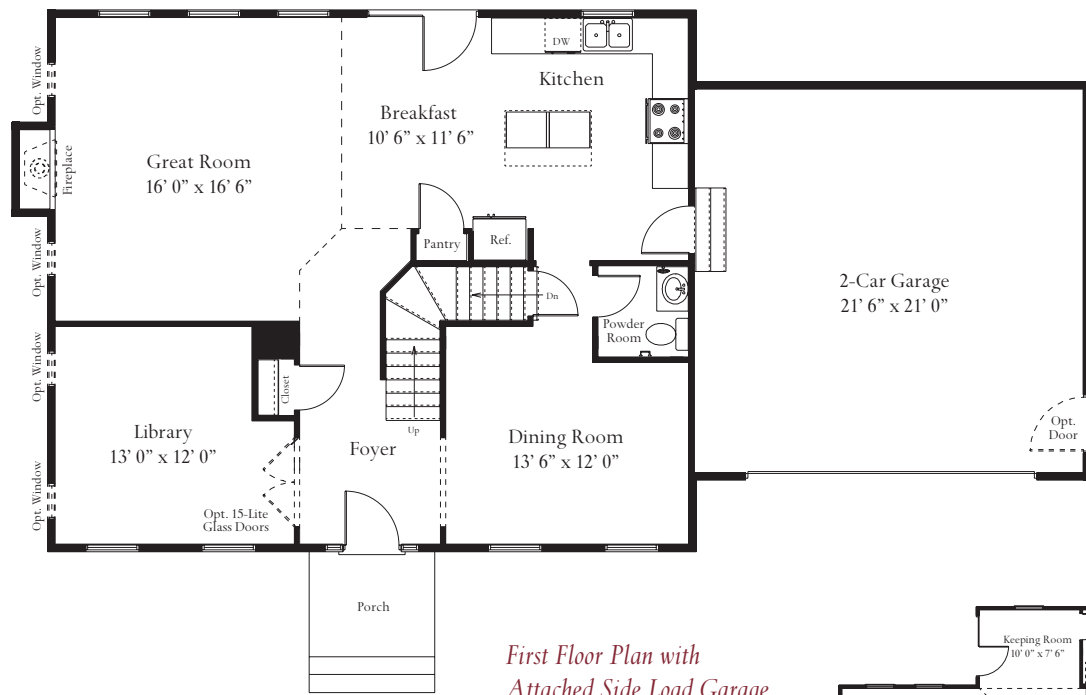
First Floor Plan



First Floor Plan with Attached Rear Load Garage

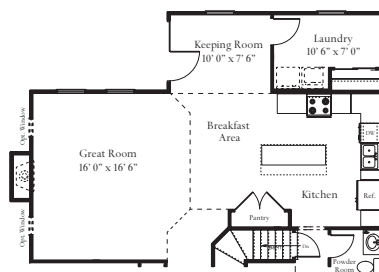


First Floor Plan with Opt. Screened Porch

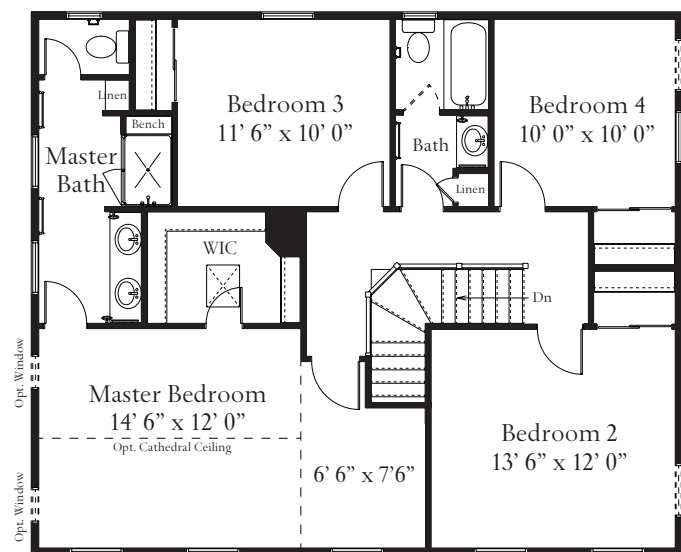


First Floor Plan with Attached Side Load Garage

MAIN LEVEL



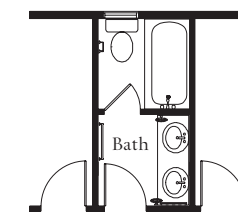
First Floor Plan with Opt. Kitchen with Expanded Island and Pantry



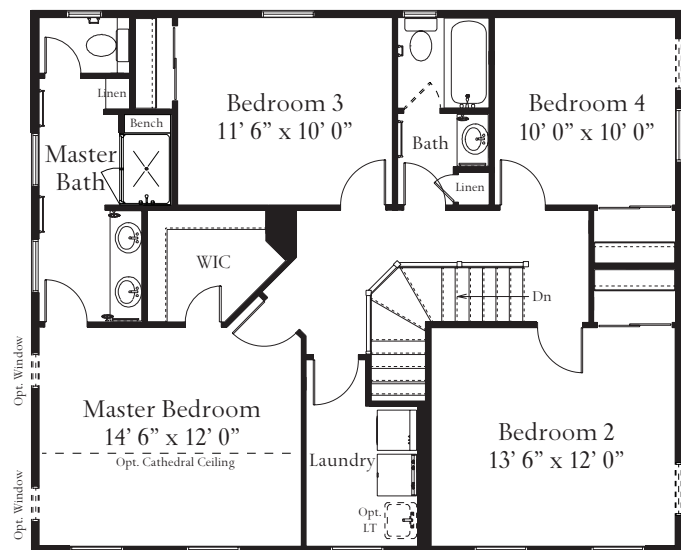
Second Floor Plan with First Floor Laundry



Opt. Master Bathroom



Opt. Hall Bath



UPPER LEVEL